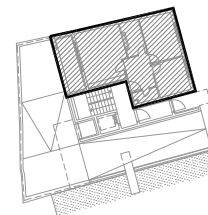
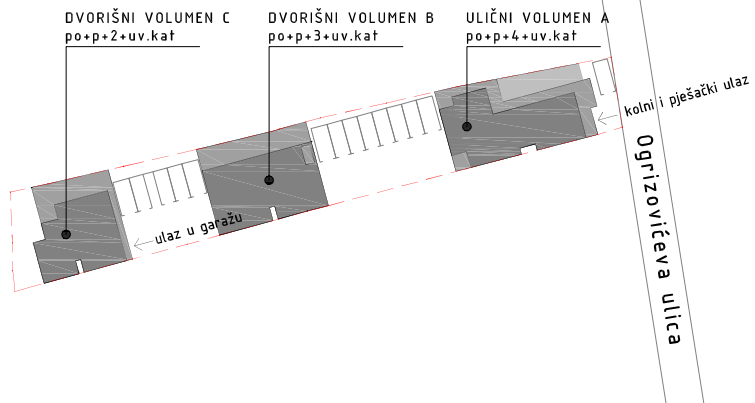
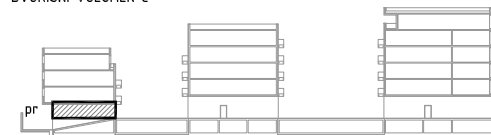


DVORIŠNI VOLUMEN C
 PRIZEMLJE - STAN C1

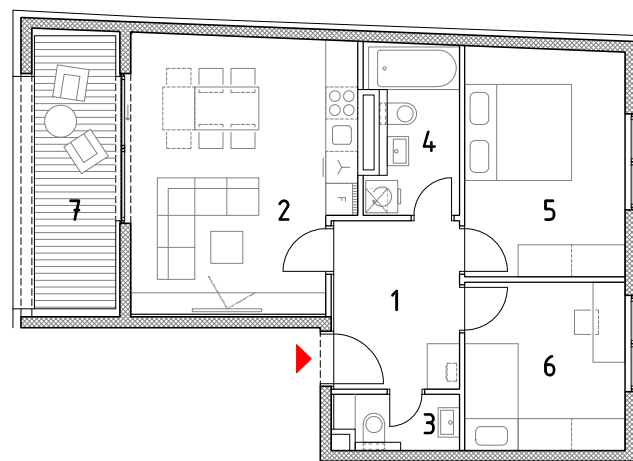


DVORIŠNI VOLUMEN C



1. ulazni hodnik	7,40m ²
2. kuhinja,blag.+dn.boravak	20,96m ²
3. wc	2,31m ²
4. kupaonica	5,31m ²
5. soba	12,78m ²
6. soba 2	9,45m ²
stan zatvoreno	58,21m ²
7. loggia	7,76m ² x0,75 5,82m ²

STAN UKUPNO 64,03m²



0 1 5m

