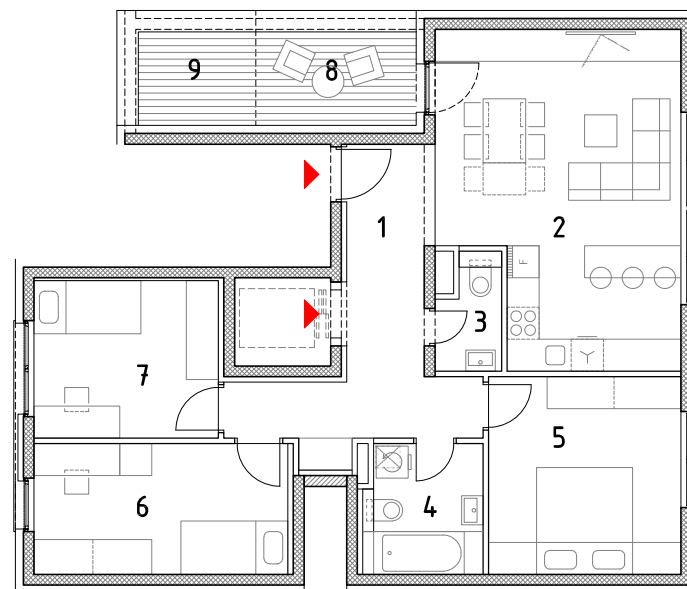
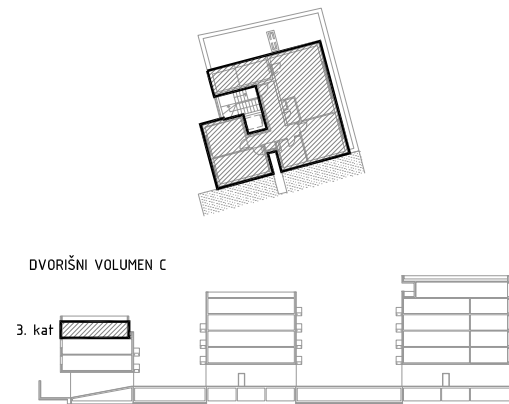
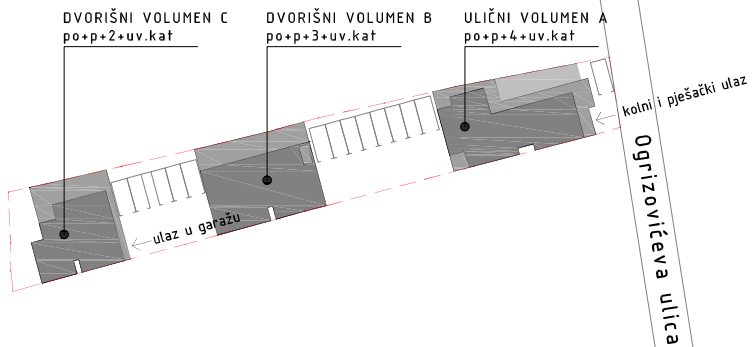


DVORIŠNI VOLUMEN C
 3. KAT - STAN C6

1. ulazni hodnik	12,26m ²
2. kuhinja,blag.+dn.boravak	26,27m ²
3. wc	2,41m ²
4. kupaonica	5,34m ²
5. soba	13,32m ²
6. soba 2	11,64m ²
7. soba 3	10,18m ²
stan zatvoreno	81,42m ²
8. natkrivena terasa	5,25m ² x0,50
9. nenatkrivena terasa	3,85m ² x0,25
	2,63m ²
	0,96m ²



STAN UKUPNO 85,01m²

