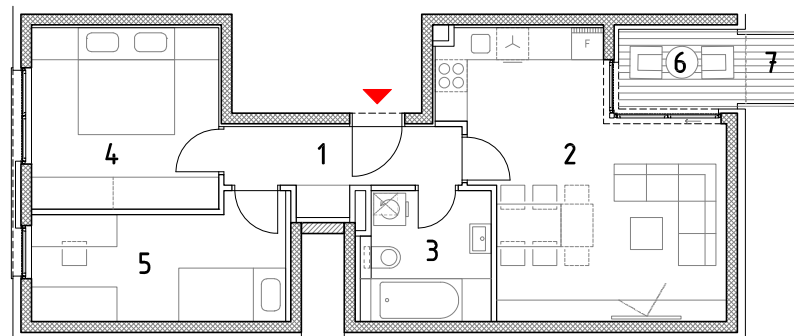
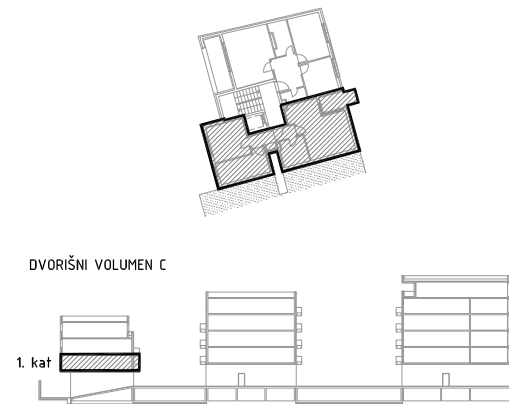
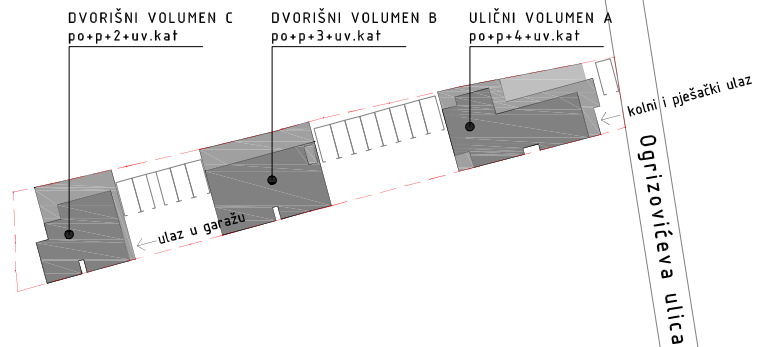


DVORIŠNI VOLUMEN C
 1. KAT - STAN C3

1. ulazni hodnik	5,50m ²
2. kuhinja,blag.+dn.boravak	22,06m ²
3. kupaonica	5,83m ²
4. soba	11,90m ²
5. soba 2	10,02m ²
stan zatvoreno	55,31m ²
6. loggia	3,50m ² x0,75 2,63m ²
7. natkriveni balkon	1,35m ² x0,50 0,68m ²

STAN UKUPNO 58,62m²



0 1 5m

