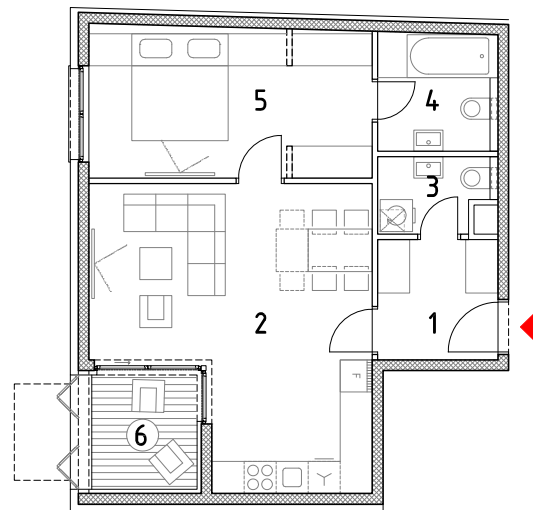
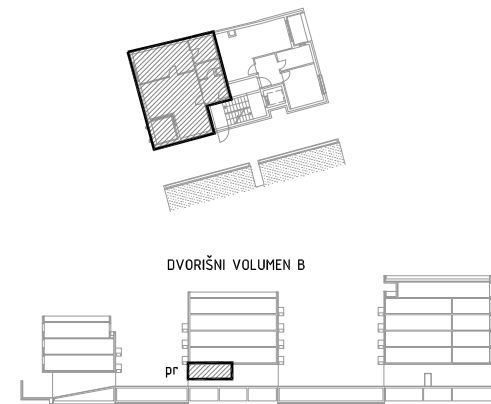
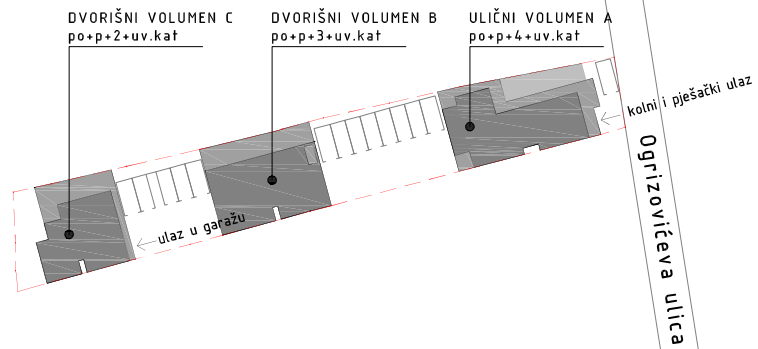


DVORIŠNI VOLUMEN B
 PRIZEMLJE - STAN B1

1. ulazni hodnik	5,06m ²
2. kuhinja,blag.+dn.boravak	24,99m ²
3. wc	2,91m ²
4. kupaonica	4,98m ²
5. soba	14,96m ²
stan zatvoreno	52,90m ²
6. loggia	4,22m ² x0,75 3,17m ²

STAN UKUPNO 56,07m²



0 1 5m

