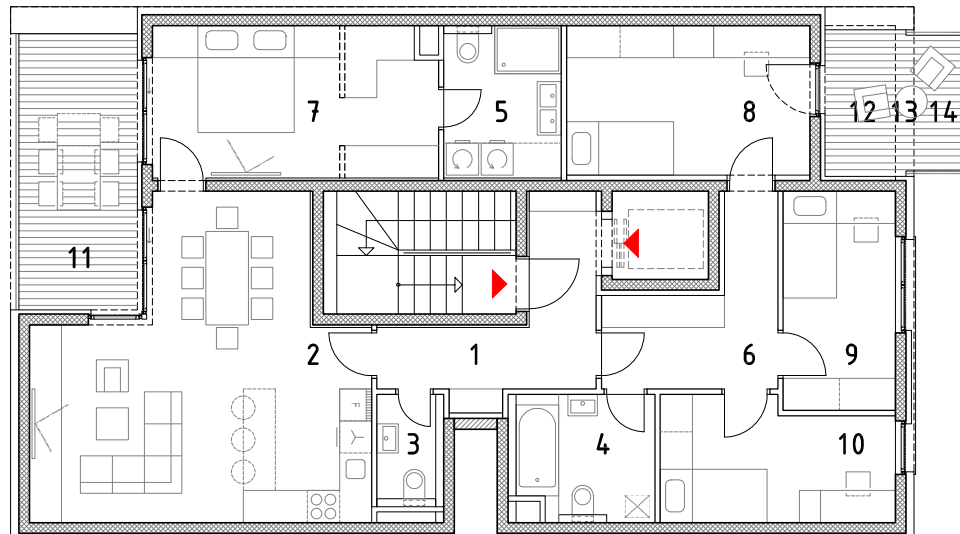
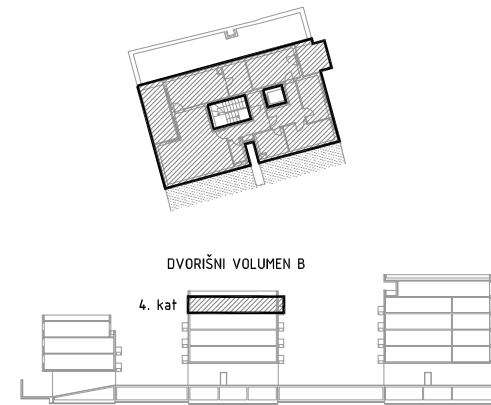
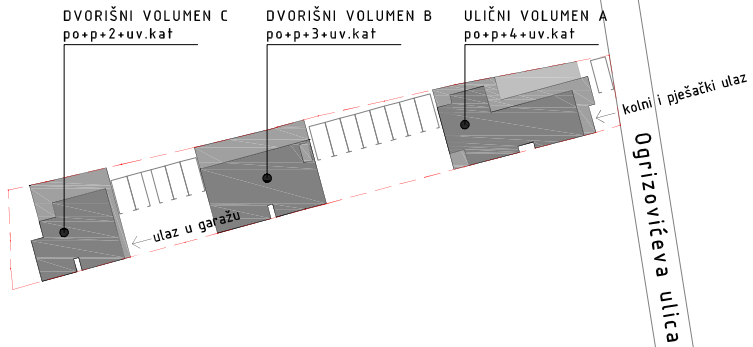


DVORIŠNI VOLUMEN B

4. KAT - STAN B9

1. ulazni hodnik		8,35m ²
2. kuhinja,blag.+dn.boravak		31,00m ²
3. wc		2,31m ²
4. kupaonica		5,96m ²
5. kupaonica 2		6,27m ²
6. predprostor		7,73m ²
7. soba		14,96m ²
8. soba 2		12,74m ²
9. soba 3		8,61m ²
10.soba 4		9,68m ²
stan zatvoreno		107,61m ²
11.natkrivena terasa	11,48m ² x0,50	5,70m ²
12.nenatkr. dio terase2	3,62m ² x0,25	0,91m ²
13.natkr. dio terase2	0,93m ² x0,50	0,47m ²
14.nenatkriveni balkon	2,67m ² x0,25	0,67m ²



STAN UKUPNO

115,36m²

