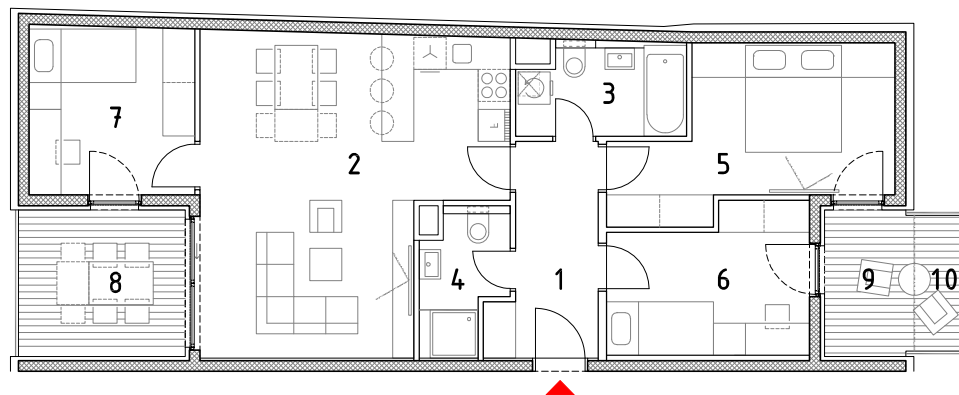
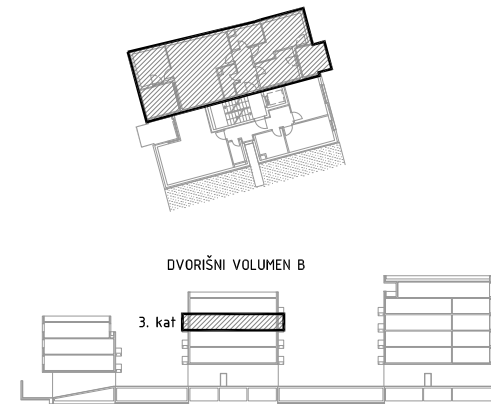
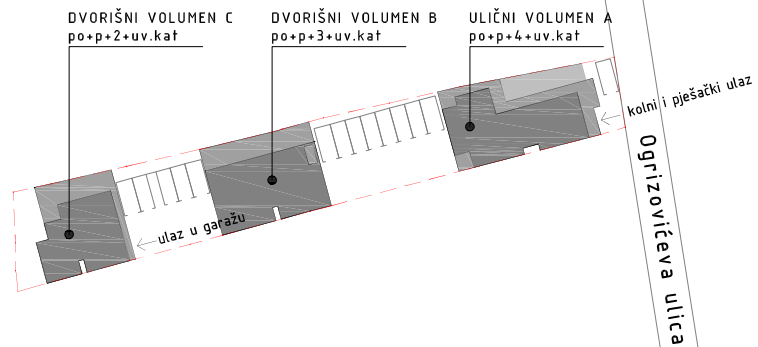


DVORIŠNI VOLUMEN B  
 3. KAT - STAN B7

1. ulazni hodnik		6,91m <sup>2</sup>
2. kuhinja,blag.+dn.boravak		29,93m <sup>2</sup>
3. kupaonica		5,32m <sup>2</sup>
4. kupaonica 2		3,86m <sup>2</sup>
5. soba		13,63m <sup>2</sup>
6. soba 2		9,76m <sup>2</sup>
7. soba 3		9,78m <sup>2</sup>
stan zatvoreno		79,19m <sup>2</sup>
8. loggia	8,55m <sup>2</sup> x0,75	6,41m <sup>2</sup>
9. loggia 2	4,55m <sup>2</sup> x0,75	3,41m <sup>2</sup>
10.natkriveni balkon	2,67m <sup>2</sup> x0,50	1,34m <sup>2</sup>

STAN UKUPNO 90,35m<sup>2</sup>



0 1 5m

