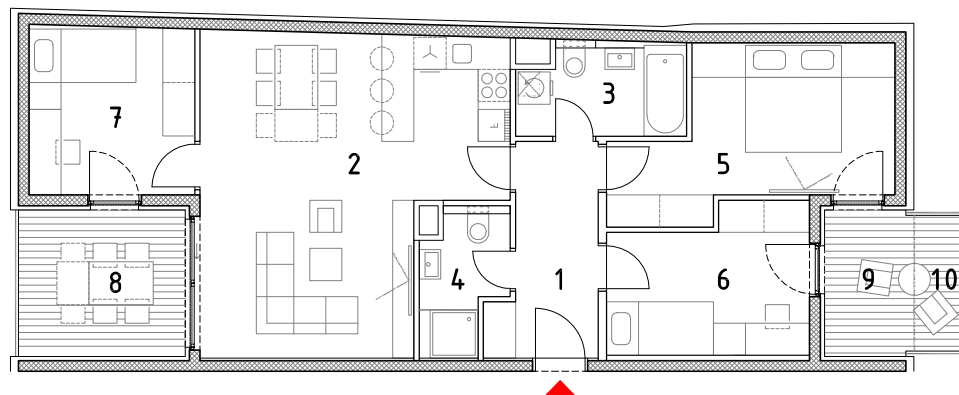
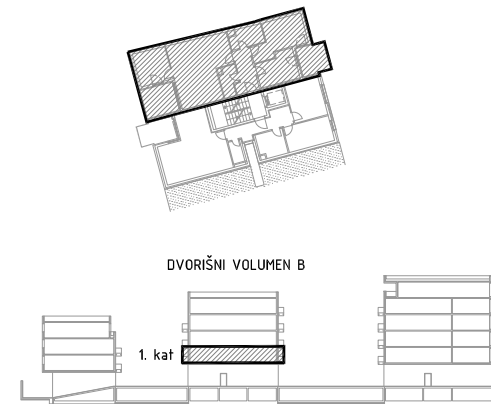
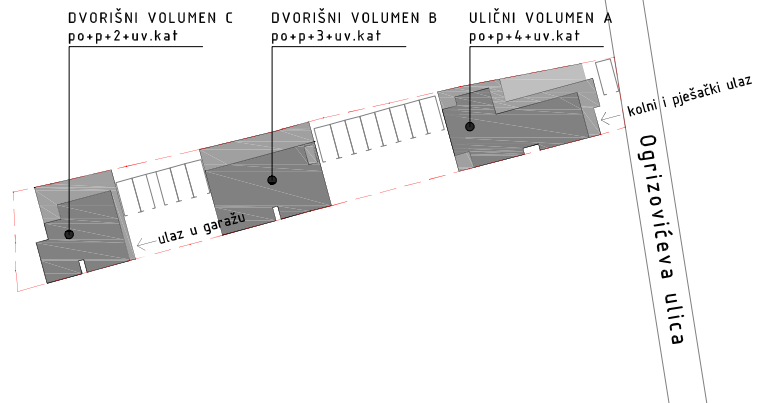


DVORIŠNI VOLUMEN B
 1. KAT - STAN B3

1. ulazni hodnik		6,91m ²
2. kuhinja,blag.+dn.boravak		29,93m ²
3. kupaonica		5,32m ²
4. kupaonica 2		3,86m ²
5. soba		13,63m ²
6. soba 2		9,76m ²
7. soba 3		9,78m ²
stan zatvoreno		79,19m ²
8. loggia	8,55m ² x0,75	6,41m ²
9. loggia 2	4,55m ² x0,75	3,41m ²
10.natkriveni balkon	2,67m ² x0,50	1,34m ²

STAN UKUPNO 90,35m²



0 1 5m

