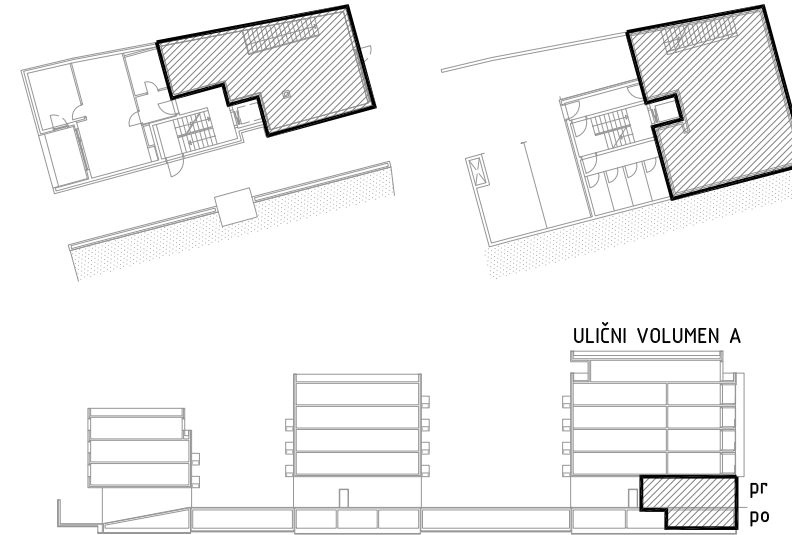
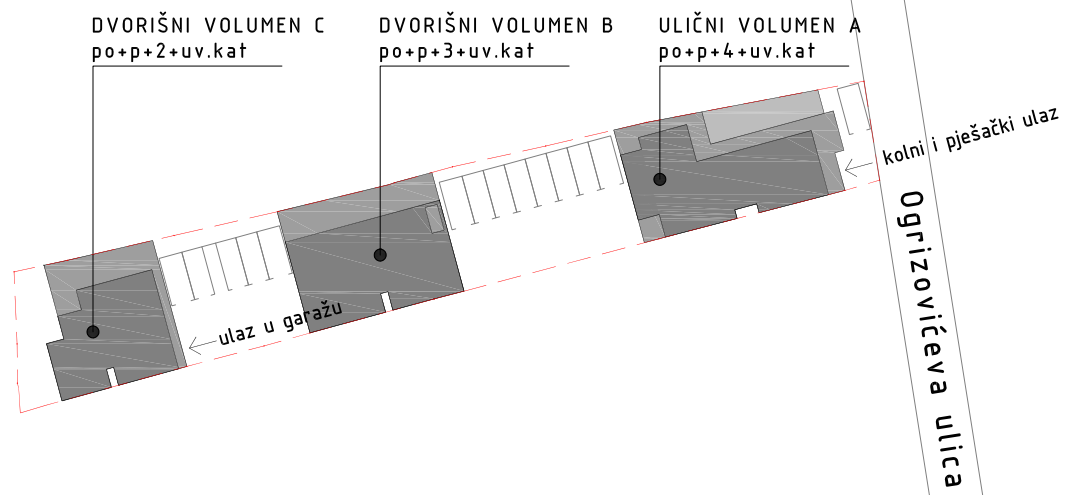


STAMBENO-POSLOVNA ZGRADA
 OGRIZOVIĆEVA 26, ZAGREB

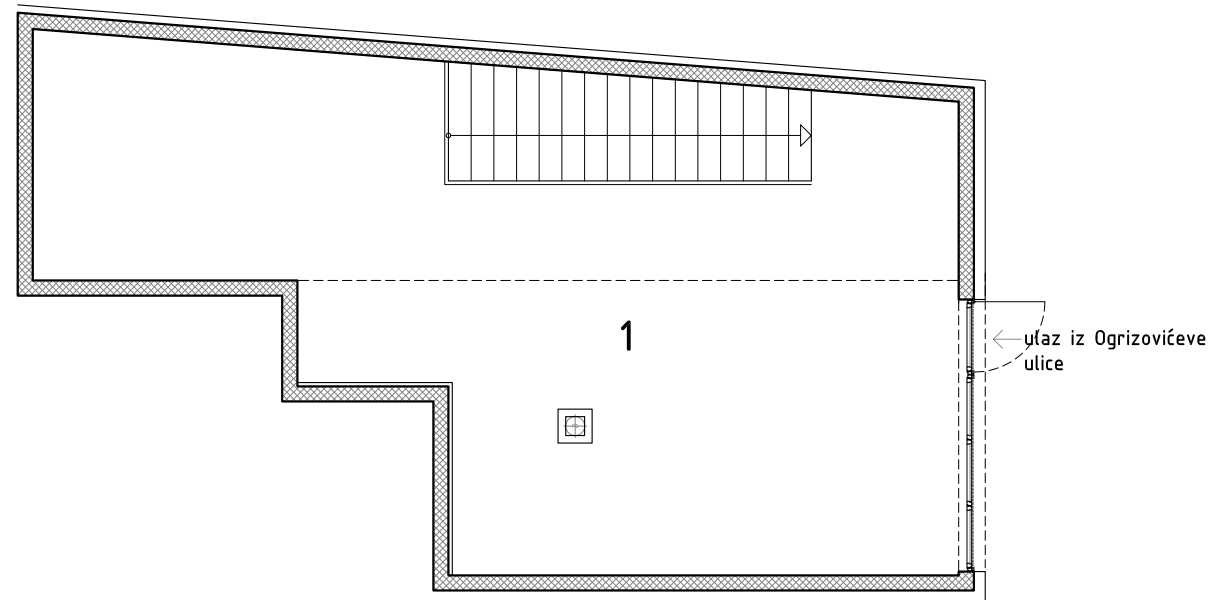
ULIČNI VOLUMEN A
 PRIZEMLJE I PODRUM
 - POSLOVNI PROSTOR



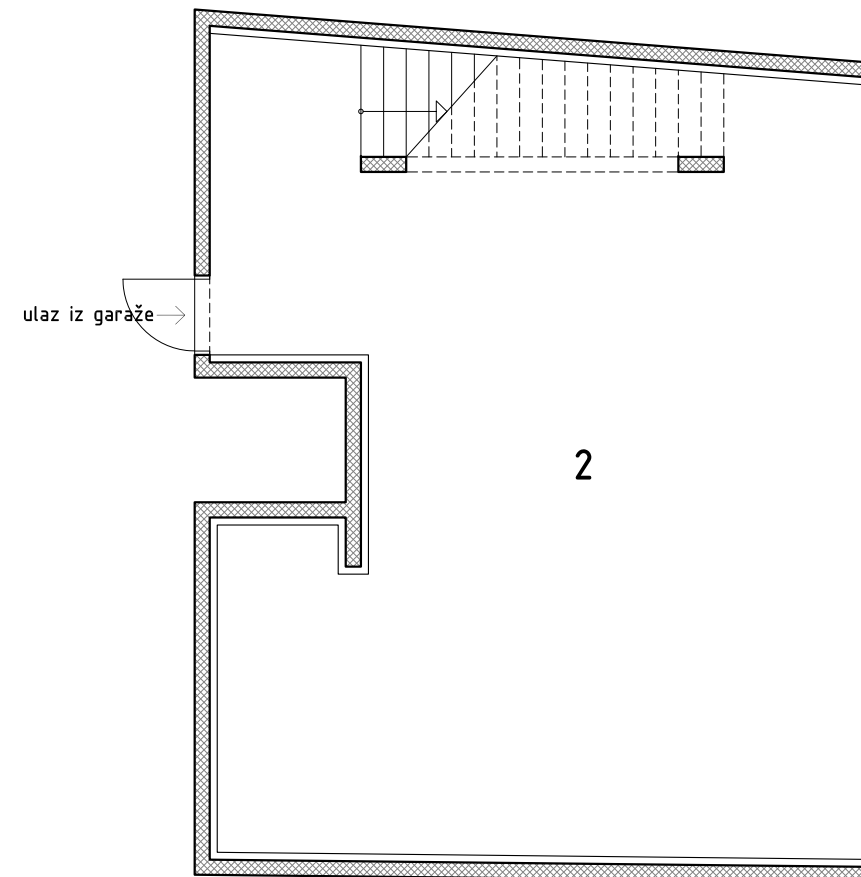
1. poslovni prostor		63,76m ²
2. poslovni prostor	79,30m ² x0,50	39,65m ²

POSLOVNI PROSTOR UKUPNO 103,41m²

TLOCRT PRIZEMLJA



TLOCRT PODRUMA -1



0 | 1 | 5|m

