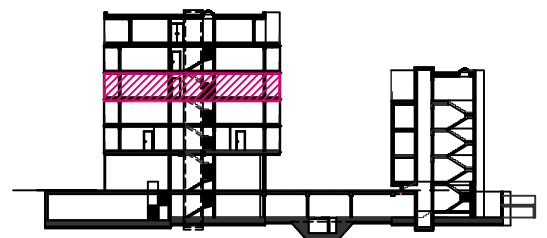
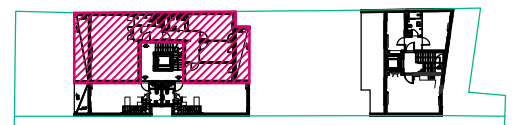


STAN br. 7		ulična zgrada		3. KAT	
br.	prostorija	podna obloga	površ. m2	koef.	UKUPNO m2
1	PREDPROSTOR	PARKET	5,5	1	5,5
2	KUHINJA+ BLAG.+DN.BORAVAK	PARKET	39,79	1	39,79
3	WC	KER.PL.	2,83	1	2,83
4	KUPAONICA	KER.PL.	5,07	1	5,07
5	DEGAGEMENT	PARKET	8,07	1	8,07
6	SPAVAĆA SOBA	PARKET	11,2	1	11,2
7	SPAVAĆA SOBA	PARKET	8,92	1	8,92
8	SPAVAĆA SOBA	PARKET	13,91	1	13,91
STAN UKUPNO					95,29
9	LOGGIA	KER.PL.	9,46	0,75	7,10
10	LOGGIA	KER.PL.	12,12	0,75	9,09
UKUPNO					111,48



PRESJEK



TLOCRT 3. KAT